

MORRIS

10 *SERIES*



THE SEEDING EXPERIENCE YOU NEED.

morrisequipment.ca

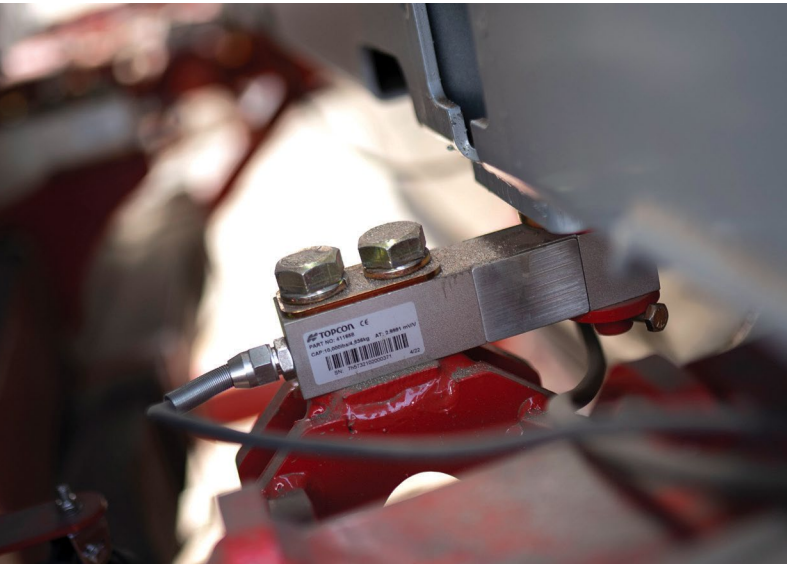


Take Your Operation to the Next Level.

The 10 Series air cart is designed to optimize the number of acres our customers plant each day.

This air cart series is loaded with customer-inspired ideas and technology to minimize the time spent on setting and filling operations and to maximize the number of acres planted for each fill. The 10 Series air cart oozes quality with a plethora of premium componentry and materials to provide years of low-maintenance, trouble-free service. Morris knows the pressure farmers are under when planting crops in a narrow window of time and designed the 10 Series to ease this burden.

Seed With Confidence.



LOAD CELLS UNDER EACH TANK

Be confident about product weight going in and out of each tank.

DYNAMIC CALIBRATION

Spend less time calibrating. Use calibration correction to maximize seeding efficiency.



Less Time Filling. More Time Seeding.



CONVEY-ALL CONVEYOR

This single belt conveyor with low profile hopper fills tanks rapidly (100 + bu/minute) and features a stainless steel top and bottom to keep this machine looking good for years. A 10-way remote control is used for movement and speed.



Agronomically Superior by Design.

MAXIMIZE ACRES PER FILL

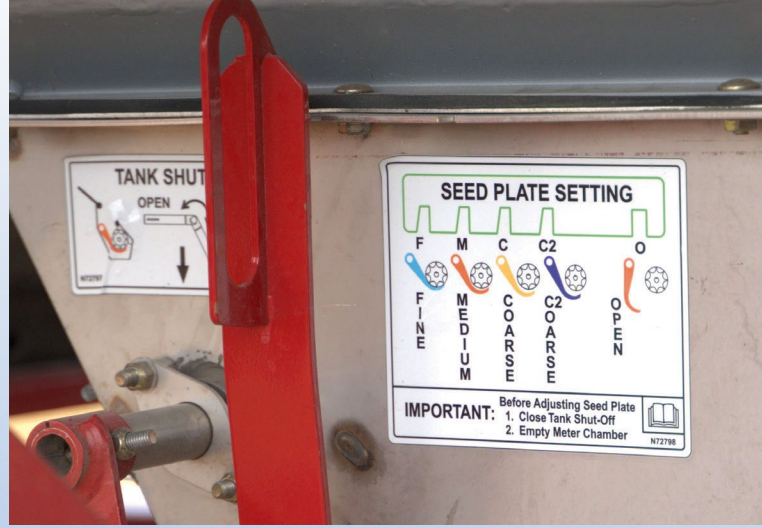
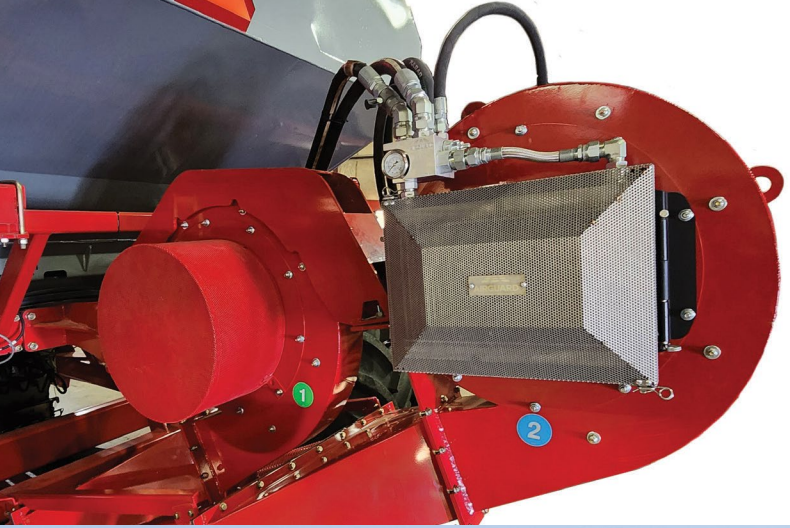
Tanks are sized to empty at the same time by applying agronomic principles and established nutrient uptake ratios.

OPTIMIZER TANK

This tank will hold two mini-bulk bags of canola and can be used to optimize the acres per fill when planting other crops.

10 series 820 model					
CROP	OPTIMIZER (80 BU)	TANK 2 (250 BU)	TANK 3 (135 BU)	TANK 4 (355 BU)	MAXIMUM ACRES/FILL
	ACRES/FILL				
cereal	30 (46-0-0)	150 (seed)	151 (11-52-0)	126 (46-0-0-)	150 acres/fill
canola	800	62 (N-P blend)	210 (11-52-0)	88 (N-P blend)	150 acres/fill
pea	inoculant	197 (N-P-K-S blend)	45 (seed)	112 (seed)	157 acres/fill

Assumptions: Some products use more than one tank to maximize acres/fill (e.g. Cereal Optimizer tank + Tank 4 is 30 + 126 = 156 acres/fill). **Seeding rates:** Wheat 30 live seed/ft²; Canola 10 seed/ft²; Pea 8 seed/ft². **Fertilizer rates:** (lb/ac actual N-P-K-S): Wheat 80-35-0; Canola 120-50-0-24 with sulfur broadcast; Pea 14-25-15-8. At higher application rates, tanks empty at the same time but with reduced acres/fill.



HIGH CAPACITY FANS

Push big product rates with the new 22" diameter fans and the optional AirGuard blockage prevention system.

FAST, CONVENIENT ADJUSTMENTS

Morris uses a common metering wheel in each metering body. A single lever adjusts seed plate clearance when metering different products.

EFFICIENT & CAMERA-READY

The 10 Series tanks have large top lids for highly efficient filling and steep angles on the hoppers for improved emptying. All tanks come with camera mounting brackets and self-sealing grommets for camera cables.

REDUCED FOOTPRINT

Reduce soil compaction and get stuck less with larger tires and rims.

Light Up the Night.

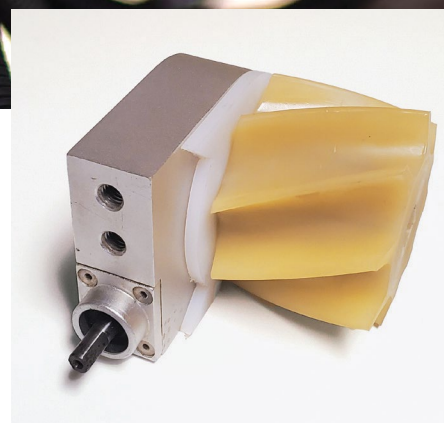
25000 lumen light system makes operation at night easy. Lights are located inside tanks, on walkways, under tanks as well lights to illuminate the drill.



Next Generation Sectional Control.

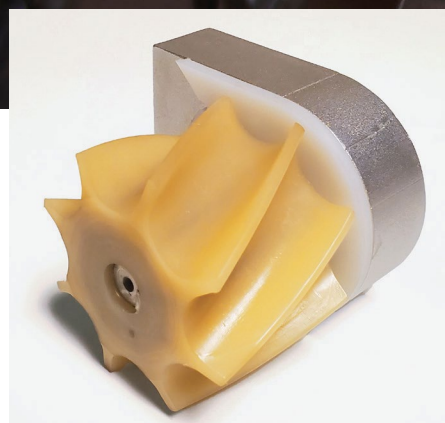
ELECTRIC-DRIVEN METERING

All new metering system driven by 24 V brushless motors with infinitely adjustable rates.



SEED METER GEAR BOX

A 40:1 worm drive gear box with sealed housing and stainless steel output shaft connects the electric motor to the metering wheel.



SPIRAL FLUTED METERING WHEEL

The spiral fluted metering wheel is a Morris staple - its continuous flow of product into the air stream is the gold-standard in metering accuracy.

Rate range: 20-300 lb/ac.



NEW DUAL SPIRAL FLUTED METERING WHEEL

This metering wheel is used in the Optimizer Tank™ and delivers outstanding low-rate flow of product into the air stream.

Rate range: 1-50 lb/ac

Top Notch Controls.

FULLY AUTOMATED SECTIONAL CONTROL

Topcon's proven fully adjustable and automated sectional control eliminates overlap and seeding misses.

IMPLEMENT COVERAGE SHARING

When seeding in the same field with multiple seeding systems, coverage maps are shared between machines so that the sectional control systems prevent seeding over land already planted.



PACKING FORCE CONTROL

This feature maintains consistent packing force and optimizes opener penetration across variable soil conditions by managing opener hydraulic pressure on Quantum drills equipped with this feature.

LIFT CONTROL

This feature automatically lifts and lowers the Quantum drill on headlands.

● Actual packing force and opener operating pressure ● Lift control settings and activation status

NEW TOPCON XD+ MONITOR

Optimize workflow with full-feature customization.

TOPCON AGRICULTURE PLATFORM (TAP)

This subscription-based feature synchronizes data effortlessly from in-cab and the office through TAP and works with nearly any data format.



Variable Rate by Section.

Morris' new electric metering system is capable of varying product rates for up to 10 sections.

Quality You Can Rely On.

Premium Finish & Materials.

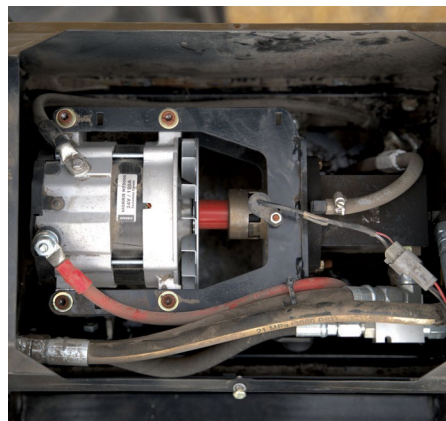
STAINLESS STEEL IN ALL THE RIGHT PLACES

The conveyor top and bottom, metering bodies, collector bodies, primary pipes and quick-access doors are all made from high-grade stainless steel.

POWDER COAT PAINT

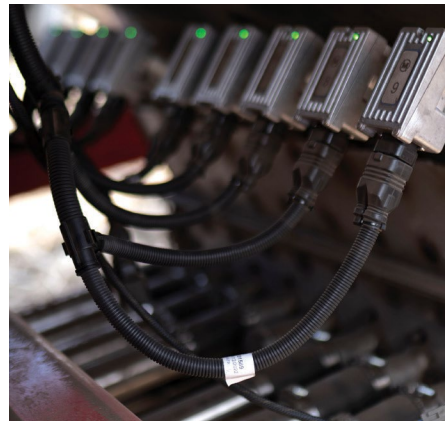
We use a premium UV-resistant powder coat paint to keep the 10 Series air cart looking great for years.

Premium Componentry



ALTERNATOR

A hydraulically driven 150 amp brushless alternator sends power to the metering system.



MILITARY-GRADE HARNESS CONNECTIONS

Superior connections make electrical systems more fail-safe.



24 V ELECTRIC MOTORS

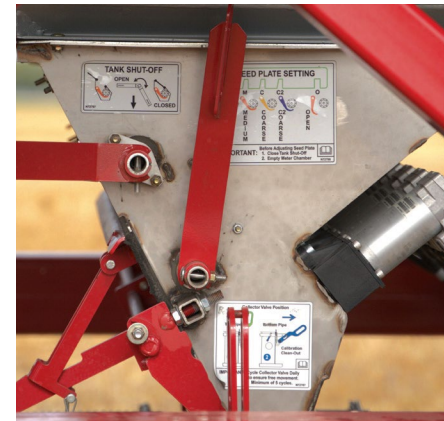
Morris selected an over-built, maintenance-free brushless electric motor with 3x the power of other manufacturers so when you are working hard, the motors will be hardly working.

Premium Experience



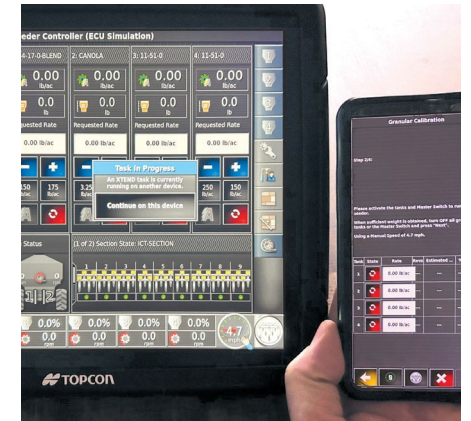
IMPROVED STAIRS

The flip-up bottom step with gas shock reduces the potential for damage and provides superior ergonomics.



CONVENIENT ADJUSTMENTS

All settings are done from the left-hand side. This includes calibration, adjusting seed plates and double shoot collectors as well as the easy new tank shut-off gates.



XTEND CONVENIENCE FEATURE

This app eliminates going back and forth between the air cart and tractor cab when doing rate calibrations.

Series 10 Air Cart

Specifications and Options

Model	Total Capacity	Tank 1	Tank 2	Tank3	Tank4	Weight Tow Behind	Weight Tow Between
660	660 bu 23258 litres 9/30/15/46 Split	60 bu 74.65 cu ft 2114 litres	200 bu 248.90 cu ft 7048 litres	100 bu 124.45 cu ft 3524 litres	300 bu 373.35 cu ft 10572 litres	40385 lbs 18318 kg	34661 lbs 15722 kg
820	820 bu 28896 litres 10/31/16/43 Split	80 bu 99.55 cu ft 2819 litres	250 bu 311.09 cu ft 8809 litres	135 bu 167.99 cu ft 4757 litres	355 bu 441.75 cu ft 12509 litres	43518 lbs 19739 kg	37206 lbs 16876 kg
1050	1050 bu 37000 litres 8/31/17/44 Split	80 bu 99.55 cu ft 2819 litres	330 bu 410.64 cu ft 11628 litres	175 bu 217.75 cu ft 6166 litres	465 bu 578.67 cu ft 16386 litres	44130 lbs 20017 kg	37769 lbs 17132 kg

Tire - 660 Standard - 820 Optional Front (Tow Behind Only) Rear	Singles - (2) VF800/70R38 Duals - (4) VF800/70R38
Tire - 820 and 1050 Standard Front (Tow Behind Only) Rear	Singles - (2) IF900/60R42 CFO Duals - (4) IF900/60R42 CFO
Hydraulic System Fan Hydraulic Fan Motor(s) Aux Power Unit (APU) Total Max Hydraulic Requirements	22" (56 cm) Diameter Impeller (5000 RPM Max) 19cc (25GPM max(2)) (95 lpm) at 3100 psi (21374 kPa) 6.3cc (7.5GPM max) (28 lpm) 58GPM (220 lpm)
Product Conveyance Convey-All Conveyor Hydraulic Requirement	35' x 10" Tube x 16" Belt (110 bpm wheat) 21GPM (Flow Controlled) (80 lpm)
Meter System Meter Drive Primary Air System Meter Rate Range Same Side Adjustment of Seed Plates, Tank Shut-Offs, Double Shoot Collectors and Quick Access Doors.	24v Brushless Electric Motors 180w 10 Run/2.5" Dia Stainless Steel Tank 1: Low 1-50 lb/ac / Tanks 2-4: Standard 20-300 lb/ac Standard
Electrical System 24v Brushless Alternator 24v/12v Equalizer System Sealed ECU and Battery Modules Military Grade Harness Connectors Undertank/Intank/Walkway/Conveyor Lighting Tool Bar Lighting	150A 24v-150A/12v-40A Standard Standard 12K Lumens 16K Lumens
Controls Display Monitor Automated Sectional Control Variable Rate by Section Weighs Scales Headland Management Packing Force Control Xtend Implement-Implement Coverage Topcon Agricultural Platform (TAP)	Topcon XD+ Console Fully adjustable sectional timing. Automated rate control up to 10 sections. Individual tanks on load cells. Automatically lifts/lowers Quantum drill on headlands. Maintains consistent packing force on Quantum drills. This app remotely connects to the Topcon XD+ monitor. Shares maps between seeding systems. Data management service that simplifies data transfer between the field and the office.

MORRIS  **SUPERIOR FARMS**

CORPORATE OFFICE 205 - 2100 Airport Drive, Saskatoon, SK Canada S7L 6M6
 p. 306.933.8585 f. 306.933.8626
 Questions? email: info@morrisequipment.ca

The policy of MORRIS EQUIPMENT LTD. is one of continuing improvement; therefore, the company reserves the right to change any specification without notice.