

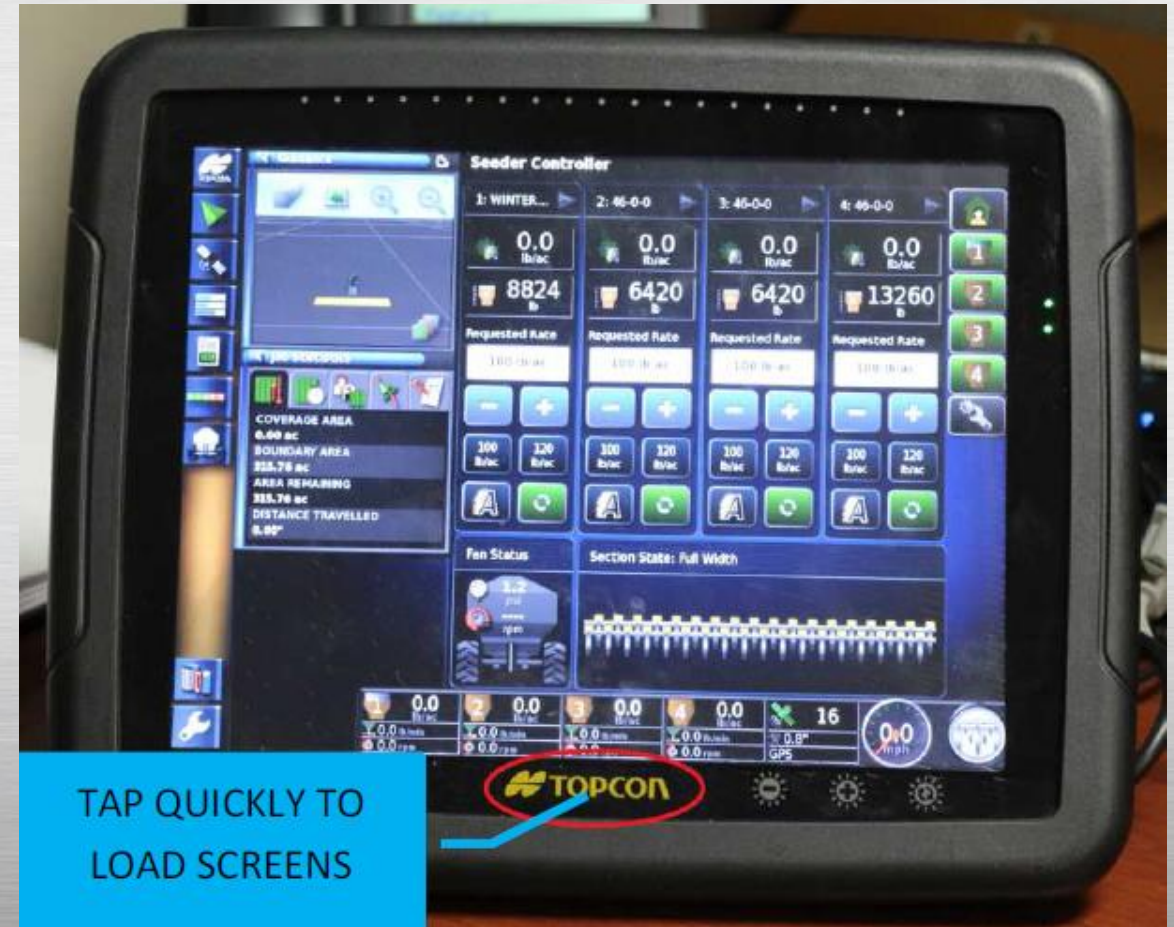


X30 MONITOR TRAINING

ICT Module 3 : ICT Systems Check

STEP 1

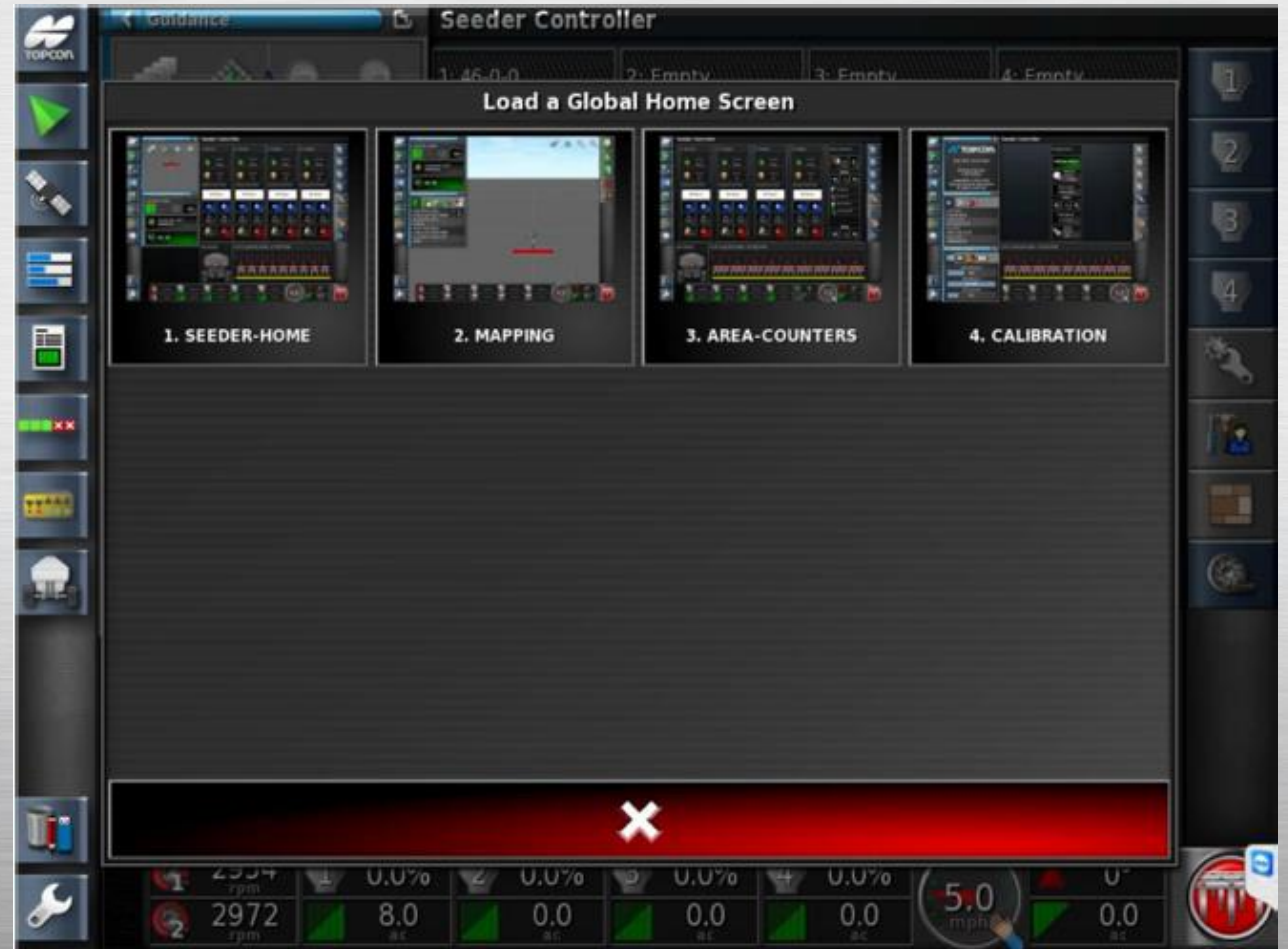
- Press the **Topcon** logo for **one second** to load the Global Home screen menu.



TAP QUICKLY TO
LOAD SCREENS

STEP 2

- Navigate to the **Mapping** screen.



STEP 3

- Expand the **Job Menu** icon.



STEP 4

- While expanded; **Create New Job**



STEP 5

- Rename the job; **SECTION-TEST**



STEP 6

- Return to the Global Home screen menu and select **SEEDER-HOME**.



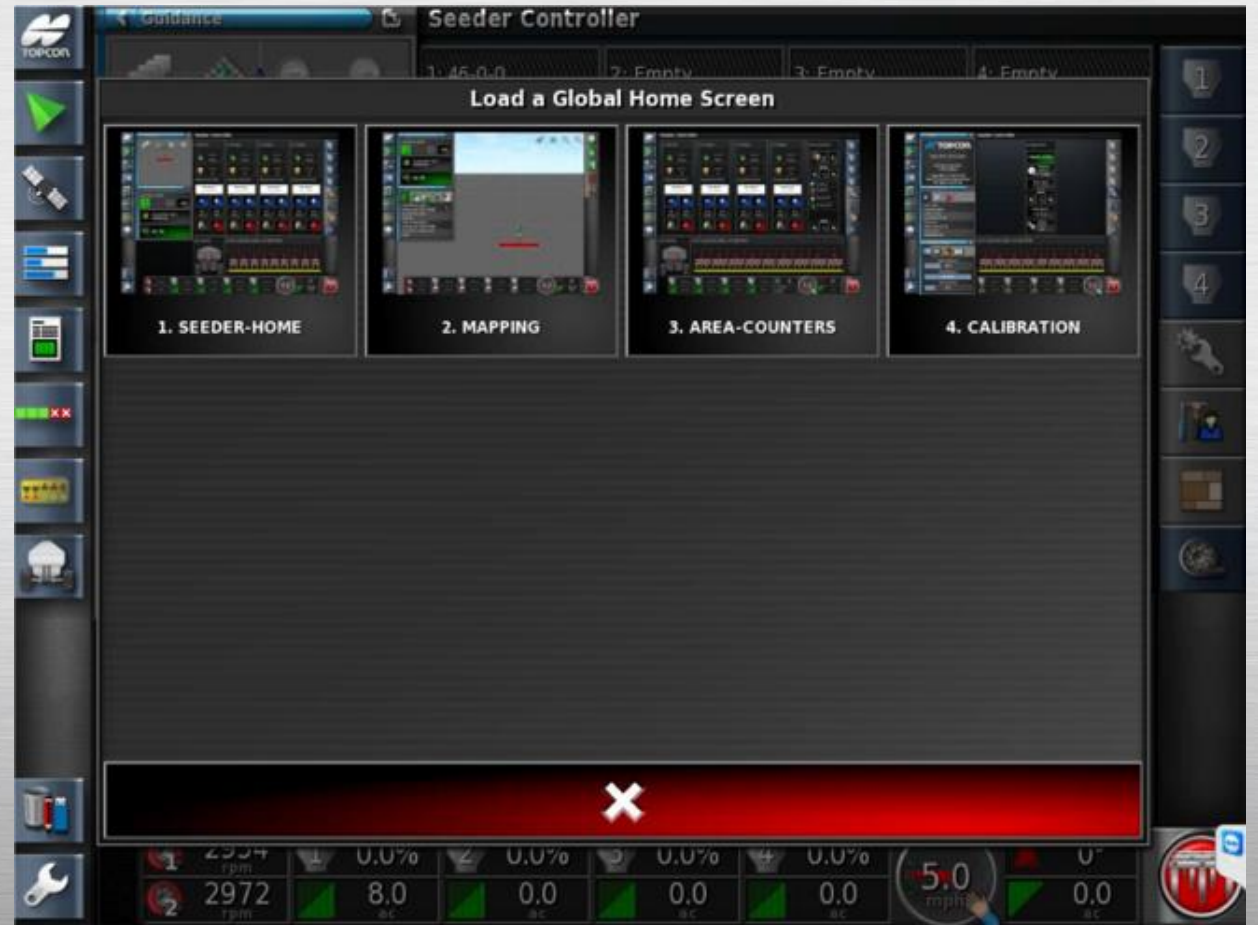
STEP 7

- **Expand** and add a highly visible product into each of the Tanks. We recommend using 46-0-0.



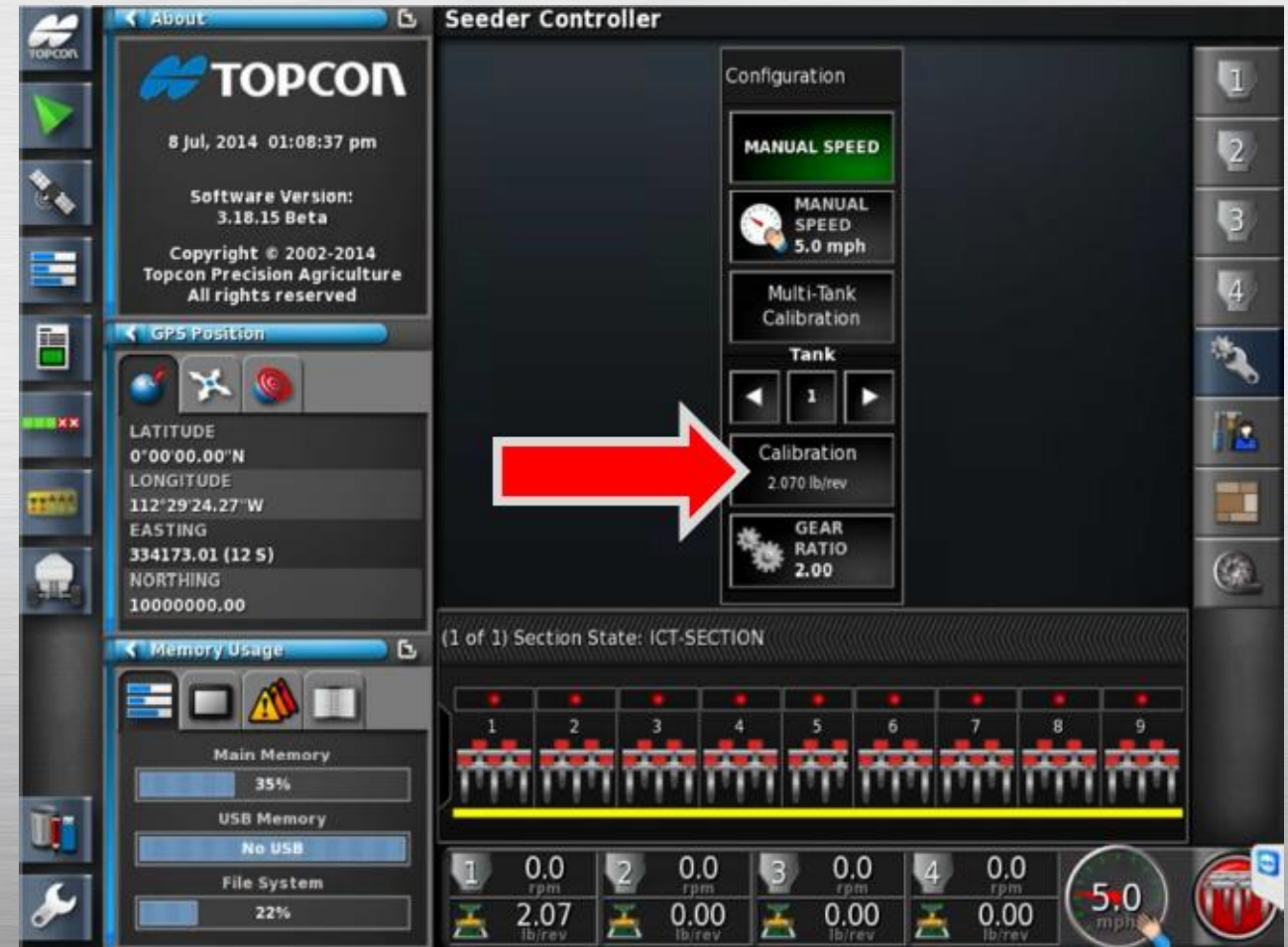
STEP 8

- Navigate to the **Calibration** page.



STEP 9

- Preform a Calibration of the test product on each of the Tanks. Refer: to the Calibration procedure outlined in the X30 User Guide if required.
 - MANUAL SPEED ON
 - CALIBRATION
 - AUTOMATIC CALIBRATION



STEP 10

- Once the Calibrations are completed.
- **DIVERT THE OIL FLOW BACK TO THE FAN!!! CLOSE THE LIDS AND RESUME THE AIRCART FOR NORMAL SEEDING OPERATION (PRODUCT DIVERTERS).**



STEP 11

- Return to the **SEEDER-HOME** screen.



STEP 12

- Ensure the **ASC Mode** is **OFF**.



STEP 13

- Turn **ON** TANK 1 only.



STEP 14

- Turn **ON** Section 1
 - RED = OFF
 - ORANGE = READY
 - GREEN = ENGAGED



The screenshot shows the 'Seeder Controller' interface. Key elements and annotations include:

- ASC OFF:** A blue box pointing to the 'ASC OFF' button in the 'Auto Section Control' panel.
- SEC 1 ON:** A blue box pointing to the '1' button in the 'Section State' row, which is currently green.
- TANK 1 ON:** A blue box pointing to the '1' button in the 'Tank' column, which is currently red.
- MANUAL SPEED ON:** A blue box pointing to the '5.0 mph' speed selector, which is currently set to '5.0'.

The interface displays various metrics including 'Requested Rate' (50 lb/ac), 'Fan Status' (2986 rpm), and 'Section State' (ICT-SECTION).

STEP 15

- Engage the Master Switch for approximately **10 seconds**.
- Note: The Section State will change to the color Green after the Master switch has been activated and the section ON /OFF time duration has full counted. This represents that product has arrived and is flowing at the openers.

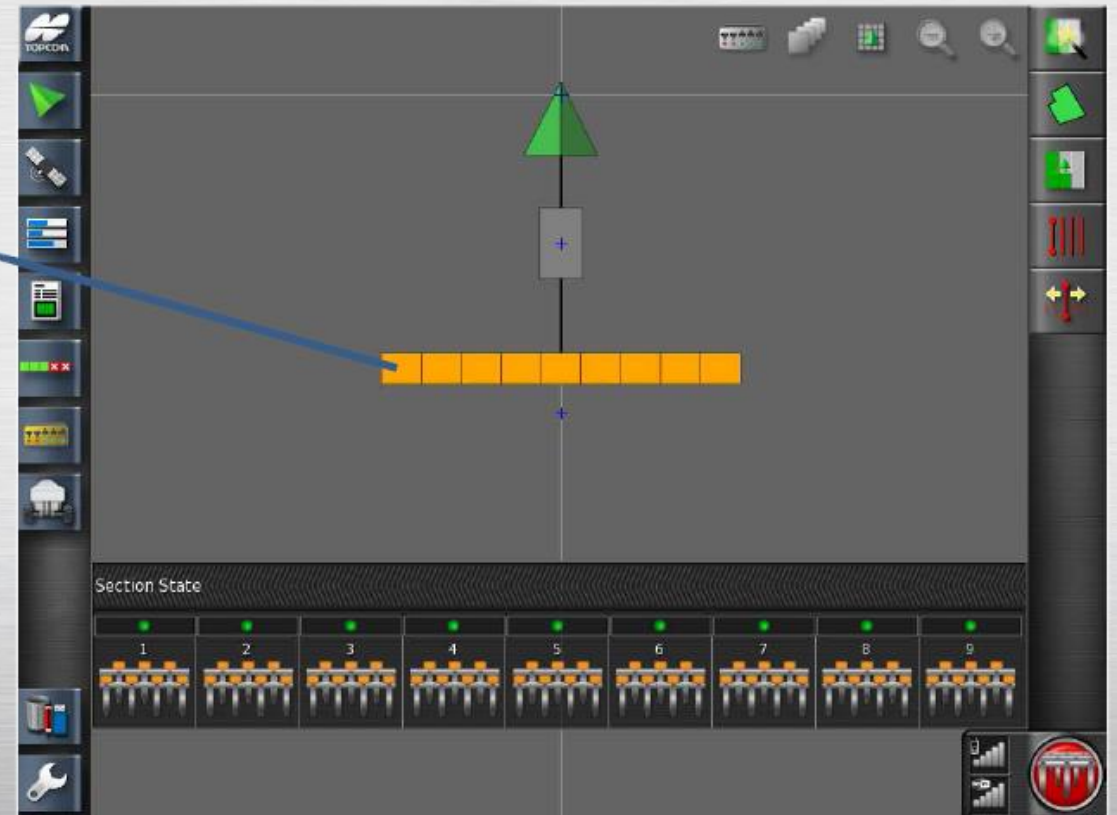
TIP: WATCHING THE MOTOR LOAD / PWM VALVE IS A GOOD REFERENCE TO LET YOU KNOW THE MOTOR HAS ENGAGED.



STEP 16

- SECTION 1 is the outer LEFT WING (DIAGRAM IS FOR REFERENCE ONLY).

SECTION 1
(LEFT)



STEP 17

- Verify that the Product has exited out of the openers on the appropriate drill section.
- Using a stop watch; time how long it takes for the product to travel from the metering body to the openers. Document your times. (SEE TIME TABLE SHEETS AT BACK OF MANUAL)



STEP 18

- Have an operator cycle the sections several times on/off while the metering is engaged.
- Inspect the Cylinder and ICT mechanism for smooth operation. Keep hands and clothing clear at all times!



STEP 19

- Turn OFF Section #1, Turn ON Section #2. Repeat the above procedure on the remaining sections



STEP 20

- Once you have tested all of the sections turn the Tank **OFF**, and repeat the complete procedure on Tank 2-3-4 individual.
- We recommend driving the complete unit forward several feet, as it makes product verification easier.



STEP 21

- When testing is completed return to the **Calibration** screen and **Turn Manual Speed OFF**, and **Enable all Sections**.



STEP 22

- Chart Timetable for tests

23. TIME TABLE

Section	1	2	3	4	5	6	7	8	9
Test 1									
Test 2									
Test 3									
Test 4									
Test 5									
Test 6									
Test 7									
Test 8									

